



**Manufactured by: M/s. Kalaga Herbal research Labs Pvt Ltd., and  
Marketed by: M/s. Kalaga Integrated Health Care Pvt Ltd.**



# REDUFLAME

Can Address Sub-Clinical & Chronic Internal Inflammation related to Autoimmune, Cancer and Neurological Diseases. Brings down Inflammatory markers like High Sensitive C-Reactive Protein, Tumour Necrosis Factor (TNF), Interleukin 6 (IL 6) and Nuclear Factor Kapha Beta (NfKB).

**1 or 2 CAP –Bi-Daily for a period of 90 days or as advised by Physician**

**FORMULATOR OF REDUFLAME - DR. K.V.G.S. MURTY, MBBS**

Physician's Information only

REDUFLAME 1



**Manufactured by: M/s. Kalaga Herbal research Labs Pvt Ltd., and  
Marketed by: M/s. Kalaga Integrated Health Care Pvt Ltd.**



### **Reduflame – Capsules Benefits:**

- 1. Reduces Internal Inflammation in the body parts, by correcting High Sensitive C-Reactive Protein, Tumour Necrosis Factor (TNF) and Interleukin 6 (IL 6).**
- 2. Supports body cell regeneration, and improves Body Cell Resistance against Oxidative damage.**
- 3. Fights internal infections with Anti-inflammatory, Anti-allergic, Anti-viral and Anti-tumour actions.**
- 4. Addresses Obesity (Adapose Tissue Dysfunction).**
- 5. Effective on Auto-immune diseases, Cancer and Intestinal related inflammation.**
- 6. Regulates Cytokine storms.**

**Manufactured by: M/s. Kalaga Herbal Research Labs Pvt Ltd., 16-4-38, First Floor, Kalaga Mart, M. G. Road, Palakollu -534260, W. G. Dt., Andhra Pradesh.**

[technical@kalagaherbal.com](mailto:technical@kalagaherbal.com), [drkvgsurthy@kalagaherbal.com](mailto:drkvgsurthy@kalagaherbal.com)

[www.kalagaherbal.com](http://www.kalagaherbal.com)

**Marketed by: M/s. Kalaga Integrated Health Care Pvt Ltd., 2-2-1109/1, Flat No. 501, Brindavan Apartments, Bagh Amberpet, Hyderabad -50013, Telangana.**

[technical@kalagahealth.com](mailto:technical@kalagahealth.com), [drkvgsurthy@kalagahealth.com](mailto:drkvgsurthy@kalagahealth.com)

[www.kalagahealth.com](http://www.kalagahealth.com)

**FORMULATOR OF REDUFLAME - DR. K.V.G.S. MURTY, MBBS**

Physician's Information only

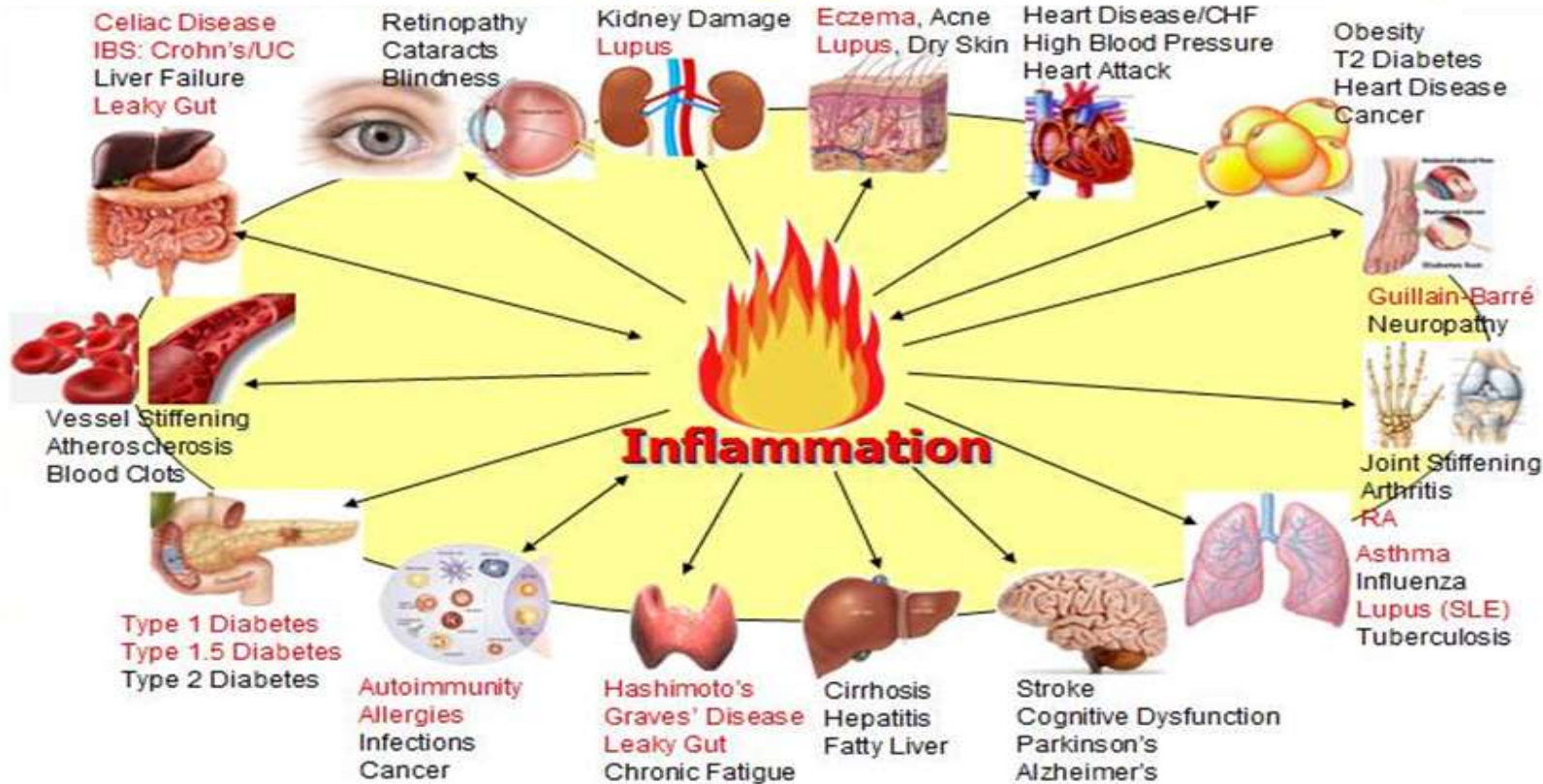
REDUFLAME 2



Manufactured by: M/s. Kalaga Herbal research Labs Pvt Ltd., and  
 Marketed by: M/s. Kalaga Integrated Health Care Pvt Ltd.



## Inflammation: Major Organs & Tissues Affected



**FORMULATOR OF REDUFLAME - DR. K.V.G.S. MURTY, MBBS**

Physician's Information only

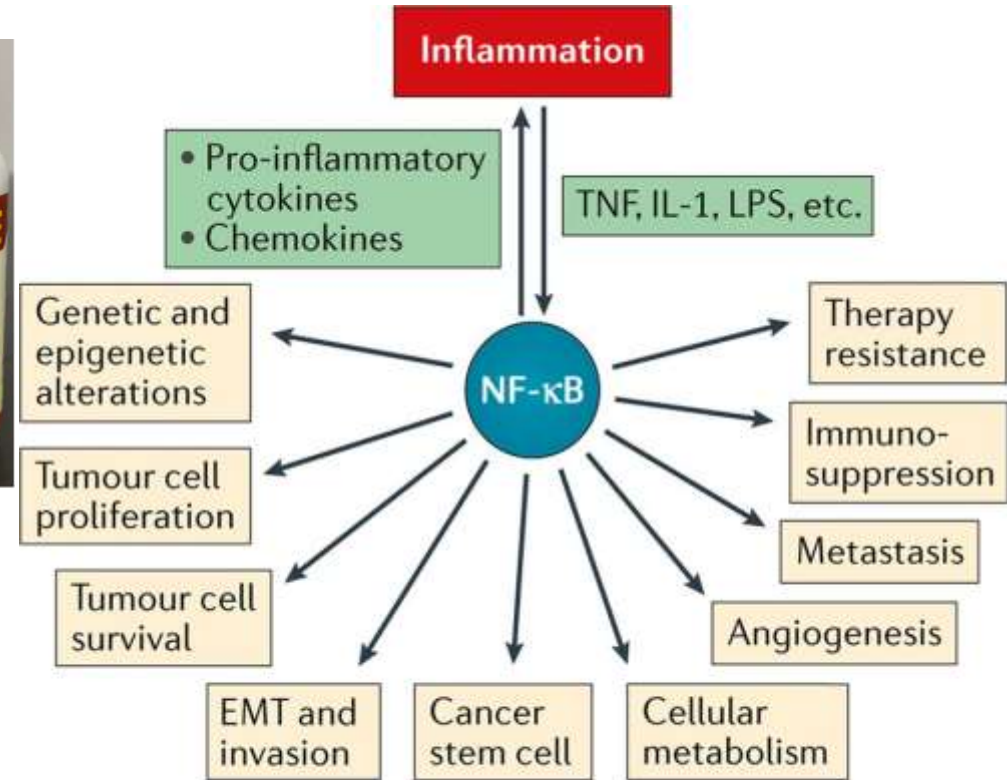
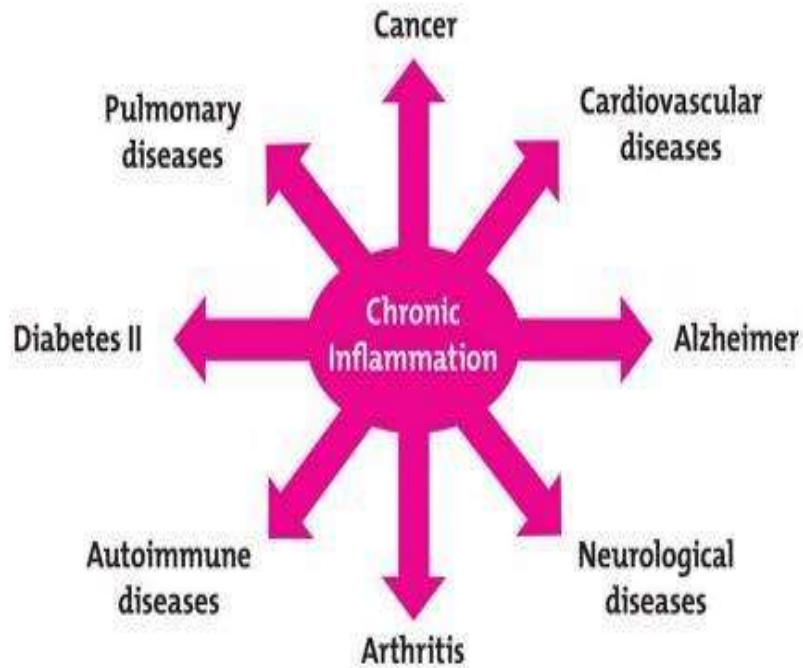
REDUFLAME 3



Manufactured by: M/s. Kalaga Herbal research Labs Pvt Ltd., and  
Marketed by: M/s. Kalaga Integrated Health Care Pvt Ltd.



### Chronic Inflammation Can Lead To...



Nature Reviews | Immunology

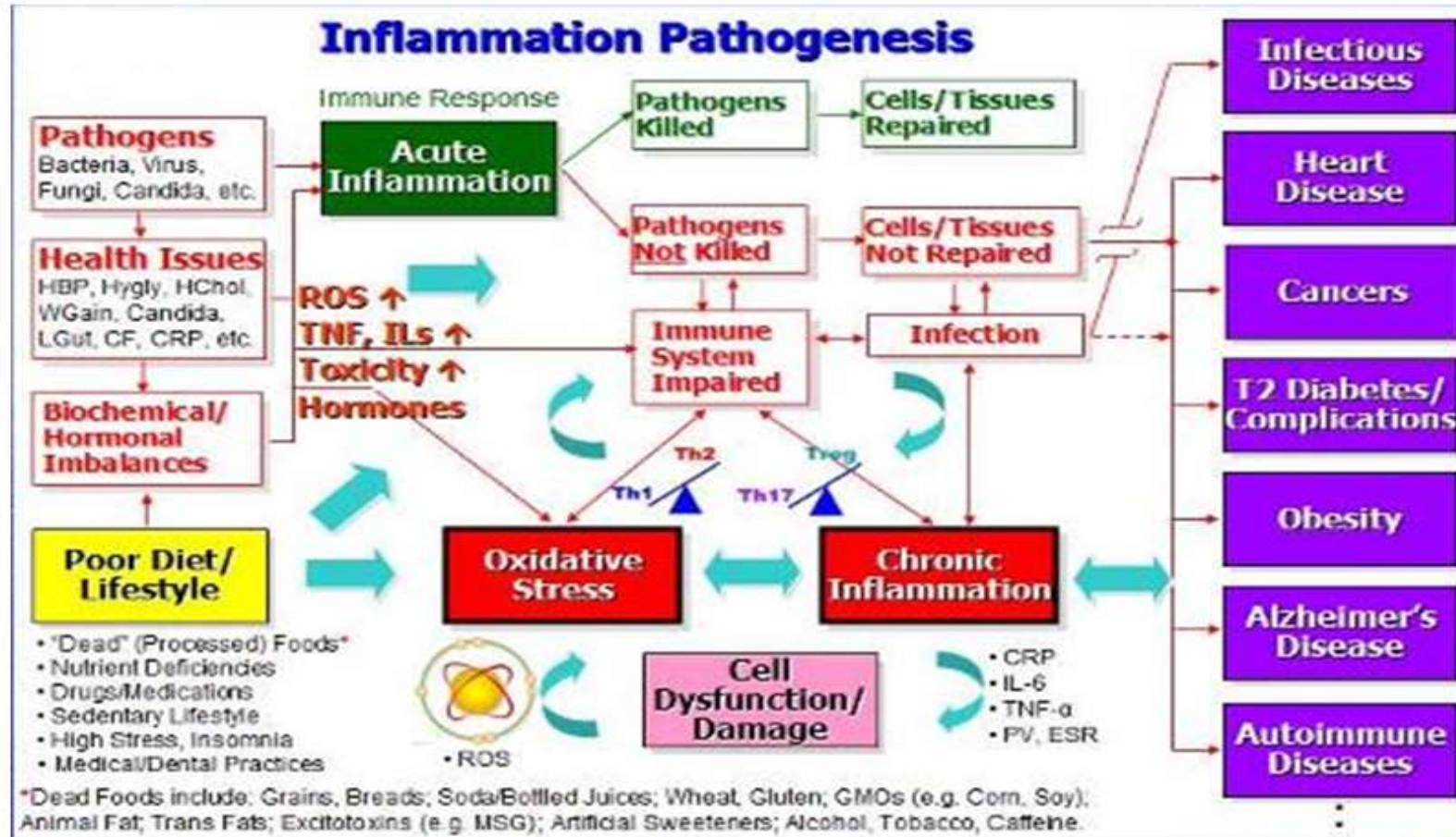
**FORMULATOR OF REDUFLAME - DR. K.V.G.S. MURTY, MBBS**

Physician's Information only

REDUFLAME 4



Manufactured by: M/s. Kalaga Herbal research Labs Pvt Ltd., and  
Marketed by: M/s. Kalaga Integrated Health Care Pvt Ltd.



**FORMULATOR OF REDUFLAME - DR. K.V.G.S. MURTY, MBBS**

Physician's Information only

REDUFLAME 5



Manufactured by: M/s. Kalaga Herbal research Labs Pvt Ltd., and  
Marketed by: M/s. Kalaga Integrated Health Care Pvt Ltd.



**Autoimmune diseases**



Ankylosing spondylitis  
Multiple sclerosis  
Eczema  
Hidradenitis suppurativa



Inflammatory bowel disease  
Atopic dermatitis  
Rheumatoid arthritis



Psoriasis  
Sarcoidosis  
Scleroderma  
Systemic lupus erythematosus

**Cardiovascular diseases**



Atherosclerosis  
Myocardial infarction



**Neurologic diseases**

Alzheimer's disease  
Epilepsy  
Bipolar disorder  
Parkinson's disease  
Depression



**Osteoporosis**



**Cancer**



**Non-alcoholic fatty liver disease**

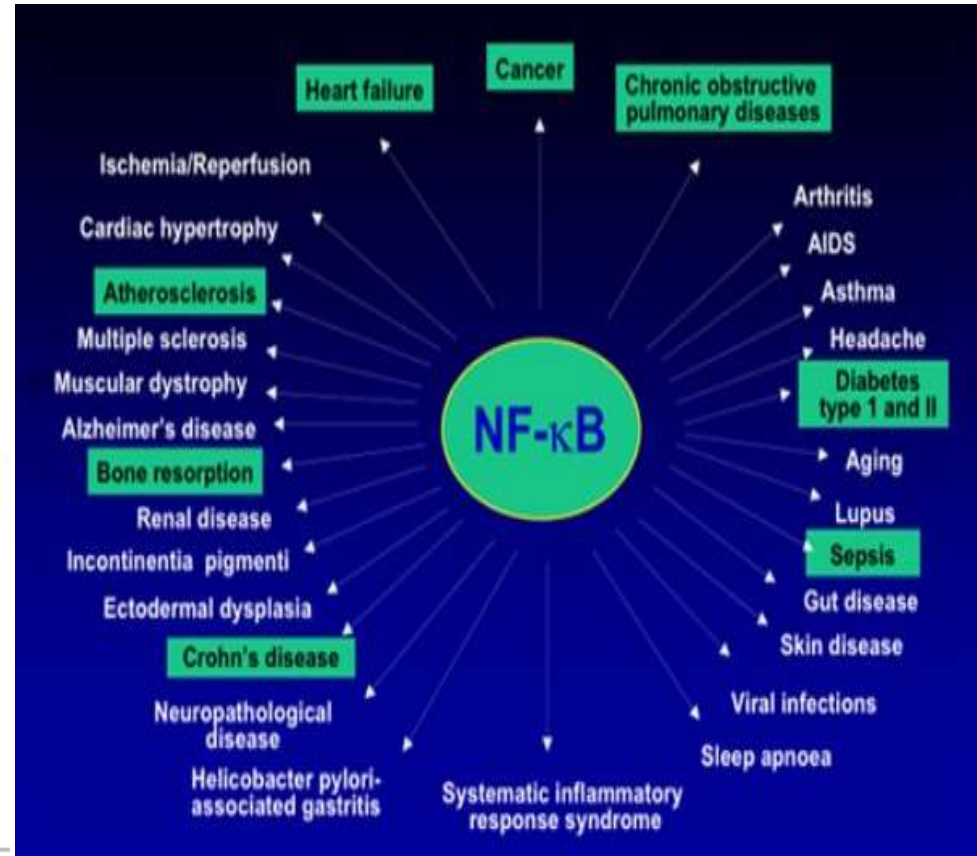
**Metabolic diseases**

Obesity  
Diabetes, type 2



**Pulmonary diseases**

Asthma  
Chronic obstructive pulmonary disease



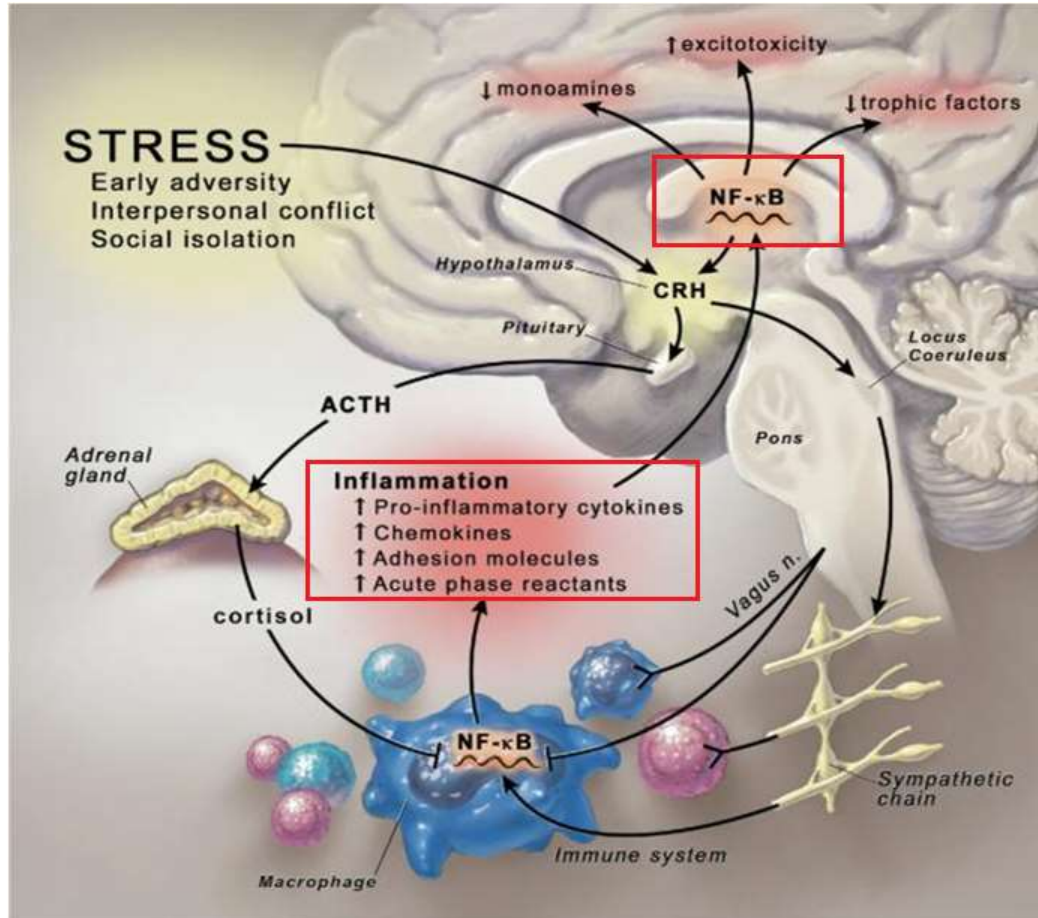
**FORMULATOR OF REDUFLAME - DR. K.V.G.S. MURTY, MBBS**

Physician's Information only

REDUFLAME 6



Manufactured by: M/s. Kalaga Herbal research Labs Pvt Ltd., and  
 Marketed by: M/s. Kalaga Integrated Health Care Pvt Ltd.



**FORMULATOR OF REDUFLAME - DR. K.V.G.S. MURTY, MBBS**

Physician's Information only

REDUFLAME 7



Manufactured by: M/s. Kalaga Herbal research Labs Pvt Ltd., and  
Marketed by: M/s. Kalaga Integrated Health Care Pvt Ltd.



## Biomarkers, Inflammation, and Plaque Formation

### Plaque Formation and Related Biomarkers

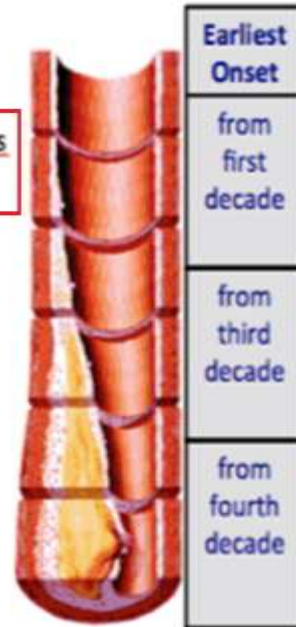
**Primary and Messenger Inflammatory Cytokines and Chemokines**  
IL-1, TNF- $\alpha$ , IL-6, IL-18, MCP-1

**Cellular Adhesion Molecules**  
sICAM, sVCAM, sSelectins

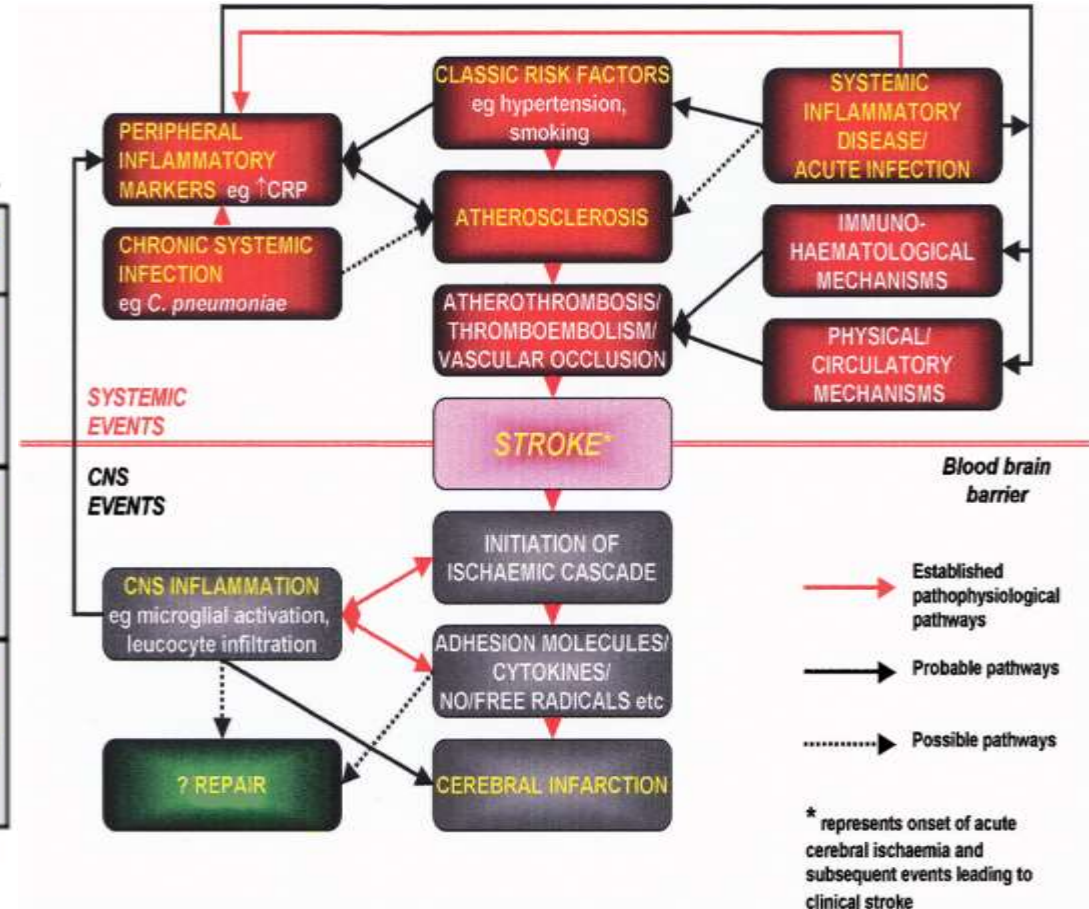
**Plaque Destabilization**  
oxLDL, MPO, MCP-1 (CCL-2), MMPs

**Plaque Rupture**  
PAPP-A, sCD40L

**Acute Phase Reactants**  
CRP, fibrinogen



Koenig W, and Khuseyinova N  
*Arterioscler Thromb Vasc Biol.*  
2007.



**FORMULATOR OF REDUFLAME - DR. K.V.G.S. MURTY, MBBS**

Physician's Information only

REDUFLAME 8



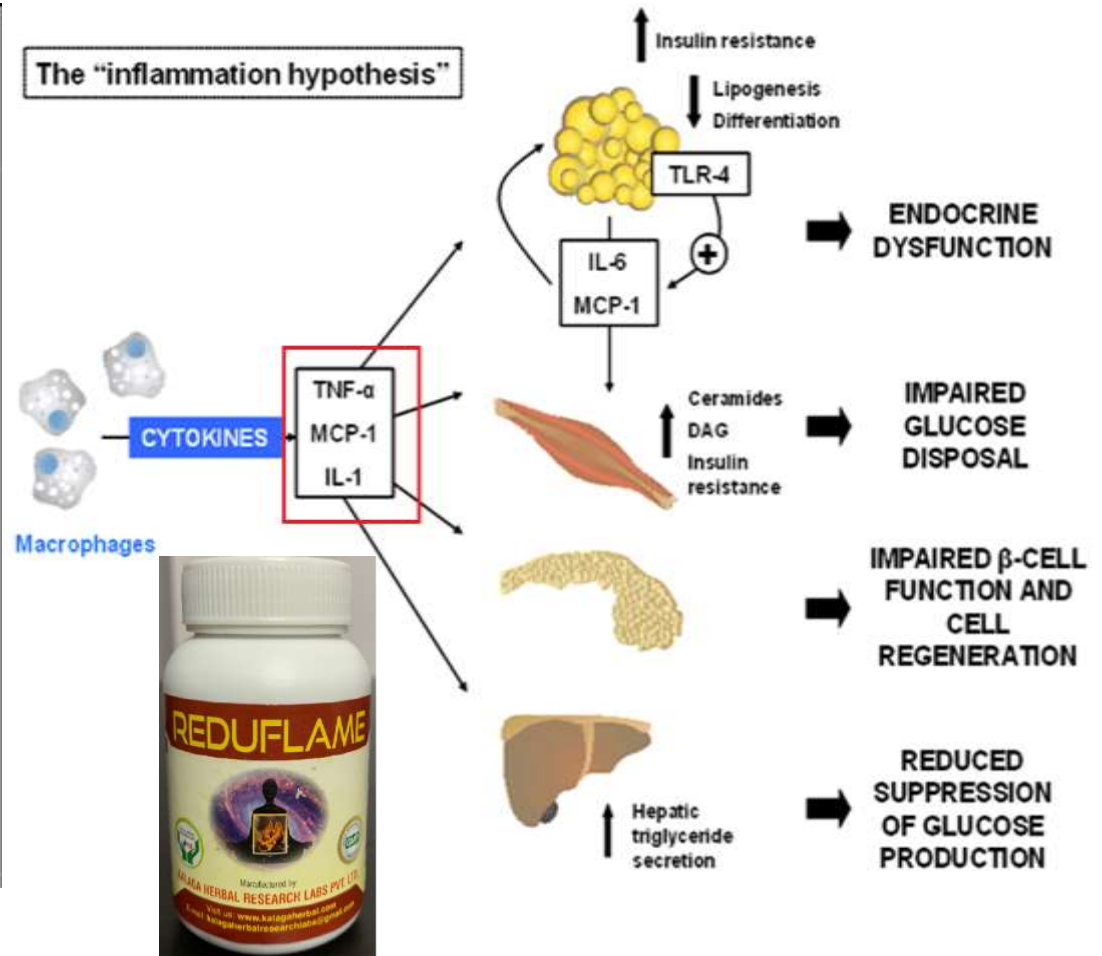
Manufactured by: M/s. Kalaga Herbal research Labs Pvt Ltd., and  
 Marketed by: M/s. Kalaga Integrated Health Care Pvt Ltd.



### The Negative Effects of Obesity on Your Health and Your life

Labels on the image include: cancer, joint problems, low self-esteem, lower life expectancy, heart attacks, depression, fewer employment opportunities, hernia, high blood pressure, type 2 diabetes, bone problems, increased sweating, limited mobility, deep vein thrombosis, high cholesterol, social discrimination, and arthritis.

MotiveWeight.Blogspot.com (used to be called TheDailyTweight.com)



**FORMULATOR OF REDUFLAME - DR. K.V.G.S. MURTY, MBBS**

Physician's Information only

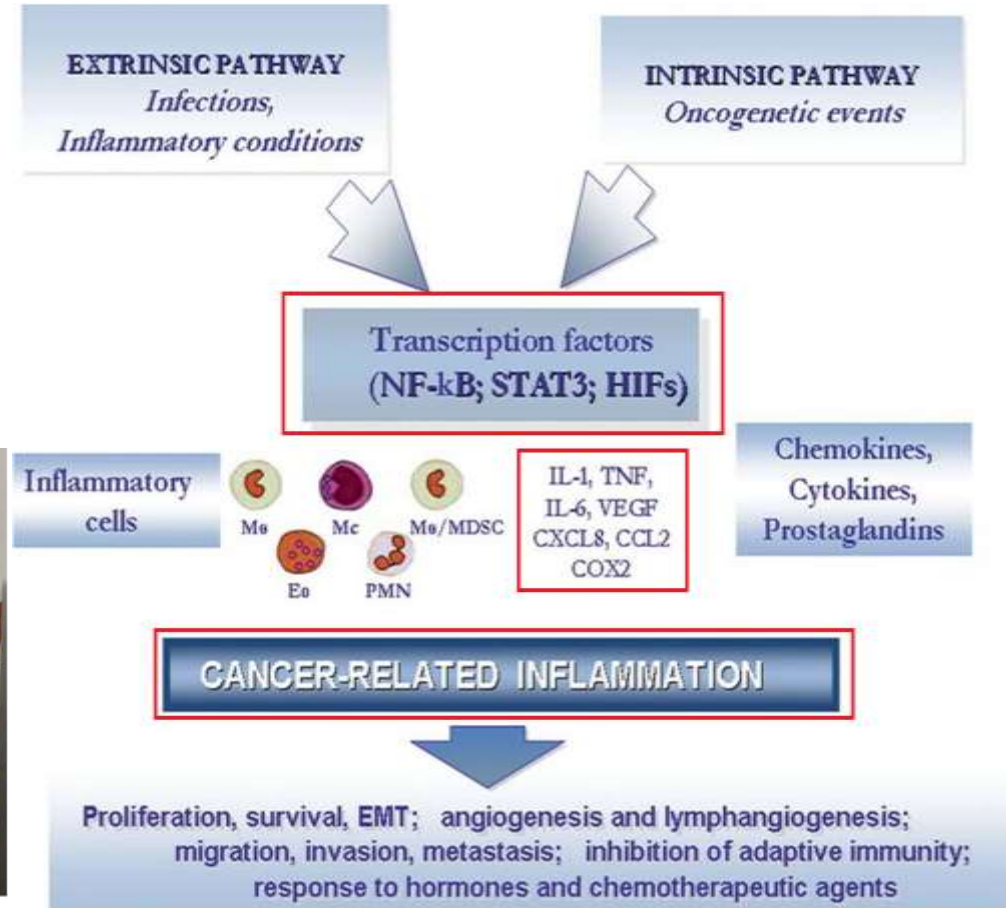
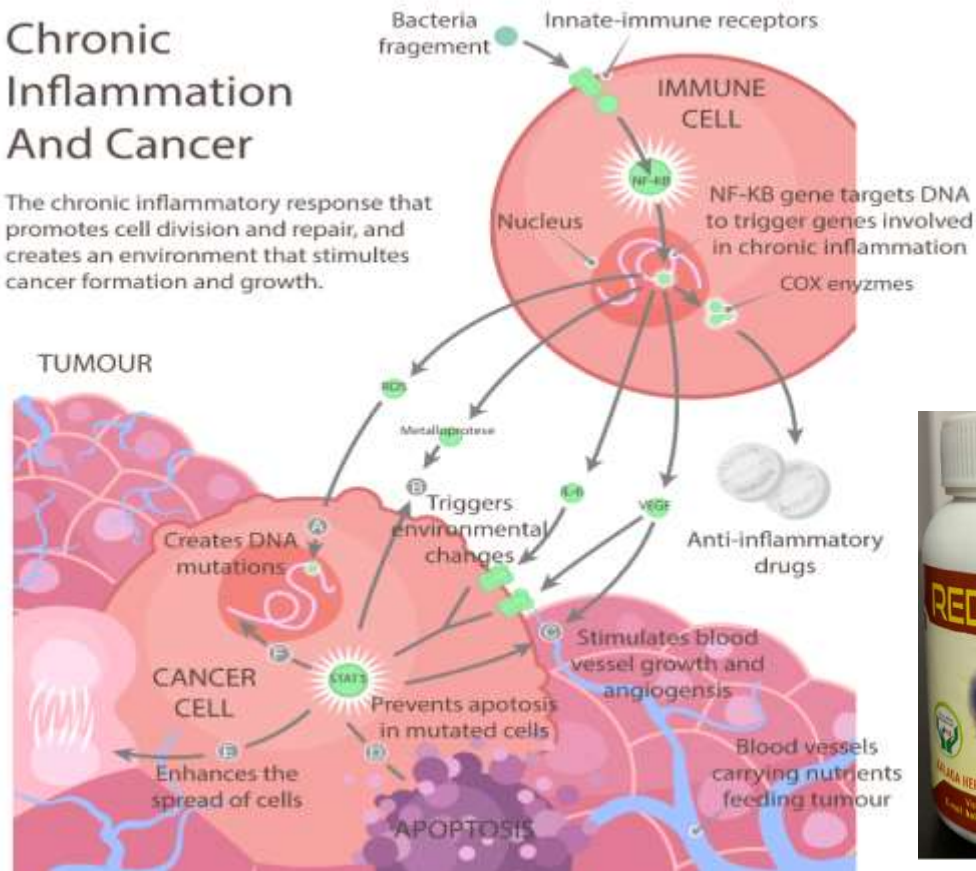


Manufactured by: M/s. Kalaga Herbal research Labs Pvt Ltd., and  
Marketed by: M/s. Kalaga Integrated Health Care Pvt Ltd.



## Chronic Inflammation And Cancer

The chronic inflammatory response that promotes cell division and repair, and creates an environment that stimulates cancer formation and growth.



**FORMULATOR OF REDUFLAME - DR. K.V.G.S. MURTY, MBBS**

Physician's Information only

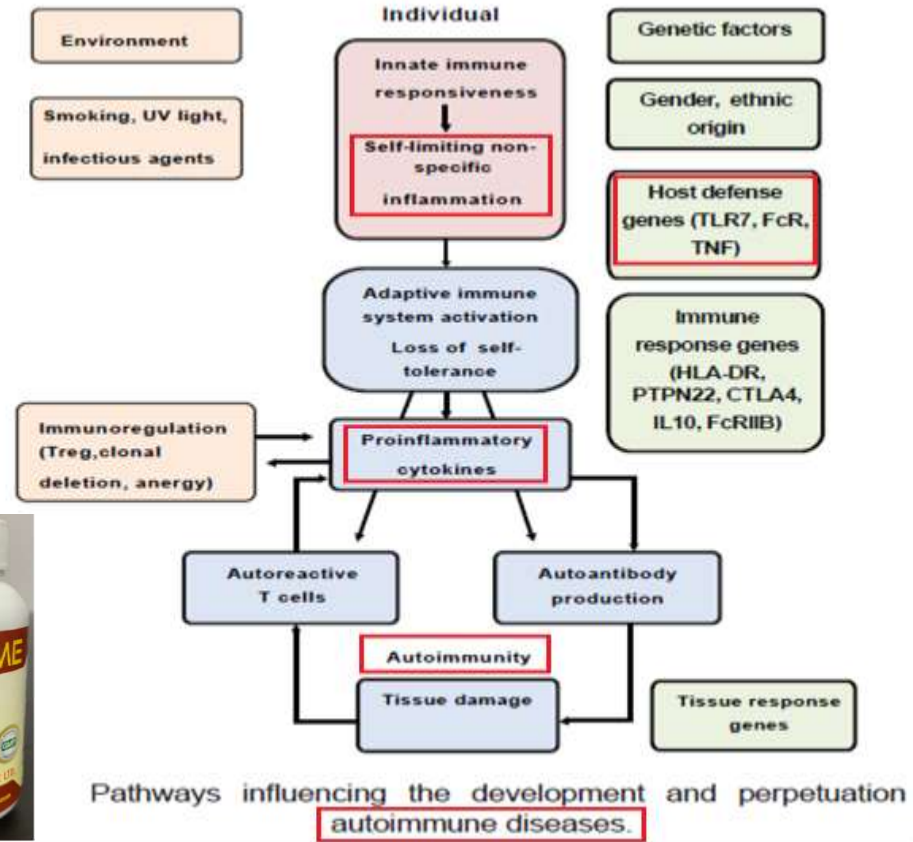
REDUFLAME 10



Manufactured by: M/s. Kalaga Herbal research Labs Pvt Ltd., and  
 Marketed by: M/s. Kalaga Integrated Health Care Pvt Ltd.



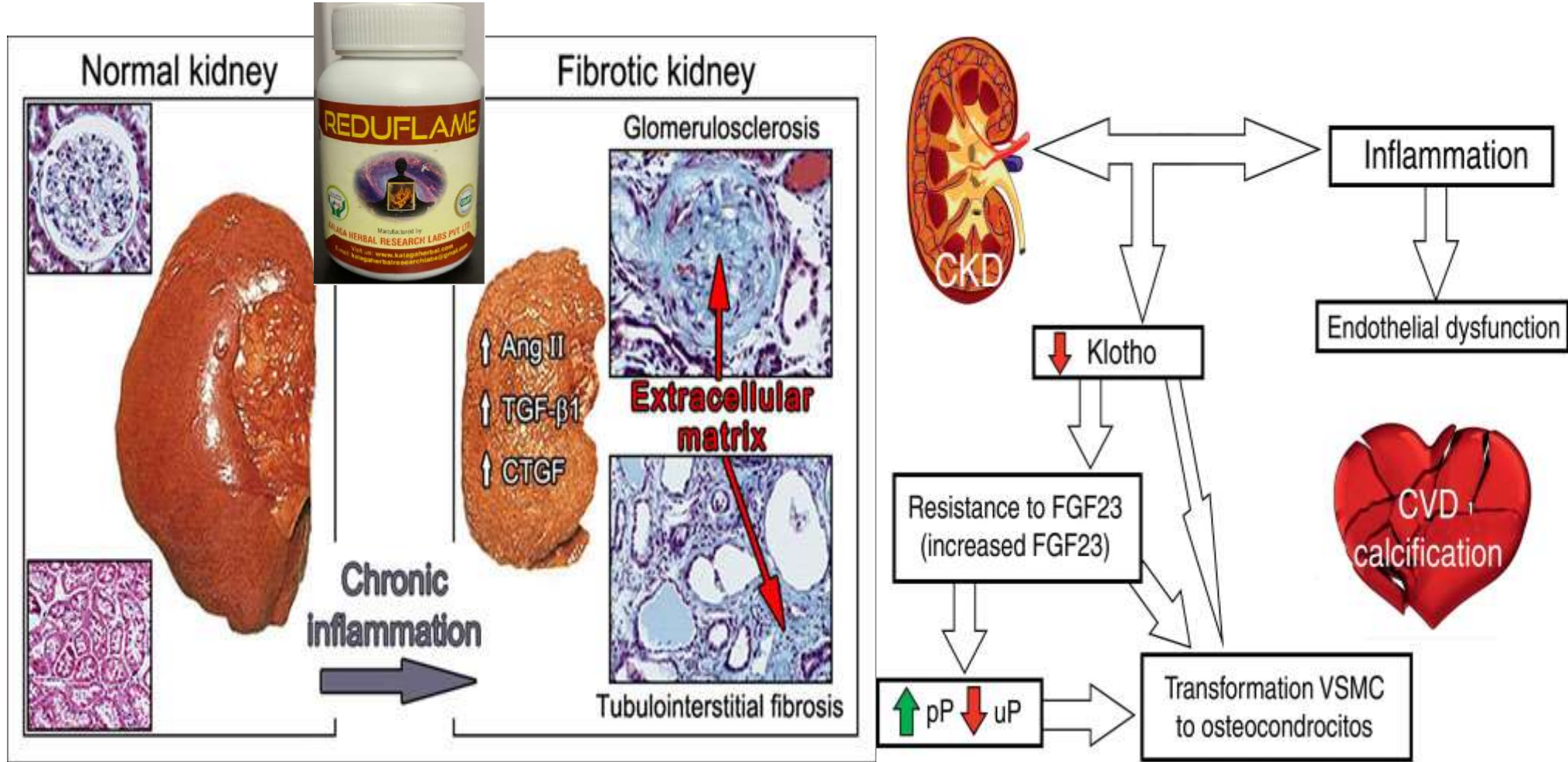
## AUTOIMMUNE DISEASES



**FORMULATOR OF REDUFLAME - DR. K.V.G.S. MURTY, MBBS**



Manufactured by: M/s. Kalaga Herbal research Labs Pvt Ltd., and  
Marketed by: M/s. Kalaga Integrated Health Care Pvt Ltd.



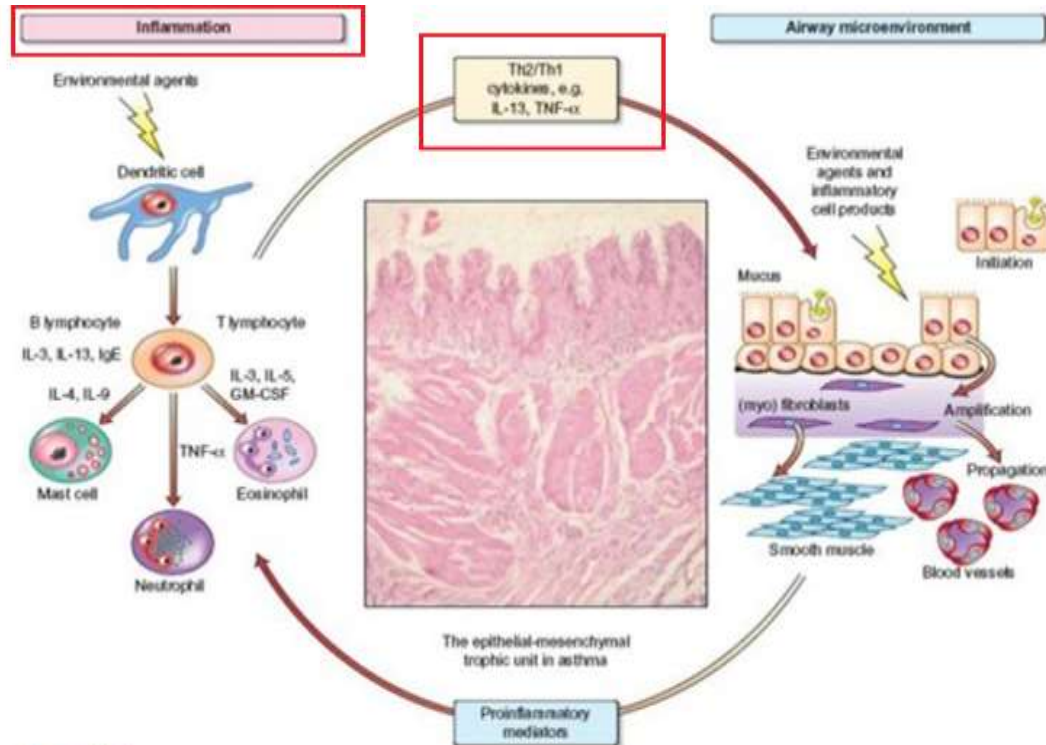
**FORMULATOR OF REDUFLAME - DR. K.V.G.S. MURTY, MBBS**

Physician's Information only

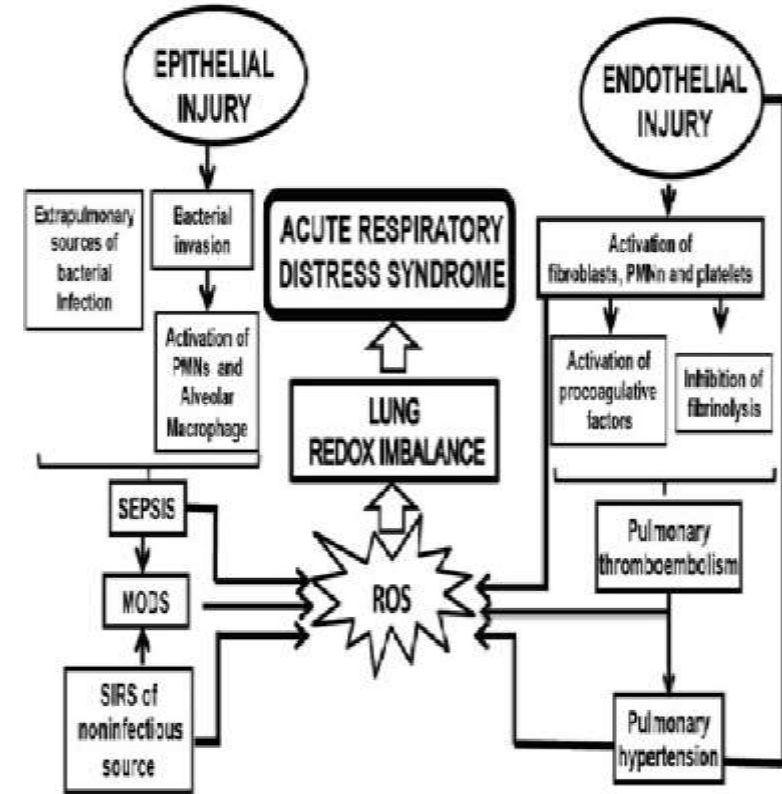
REDUFLAME 12



Manufactured by: M/s. Kalaga Herbal research Labs Pvt Ltd., and  
Marketed by: M/s. Kalaga Integrated Health Care Pvt Ltd.



**Fig. 14.34** Inflammatory and remodelling responses in asthma with activation of the epithelial mesenchymal trophic unit. Epithelial damage alters the set point for communication between bronchial epithelium and underlying mesenchymal cells, leading to myofibroblast activation, an increase in mesenchymal volume, and induction of structural changes throughout airway wall. Adapted from Holgate ST, Polosa R. The mechanisms, diagnosis, and management of severe asthma in adults. *Lancet* 2006; 368: 760-793 with permission from Elsevier.



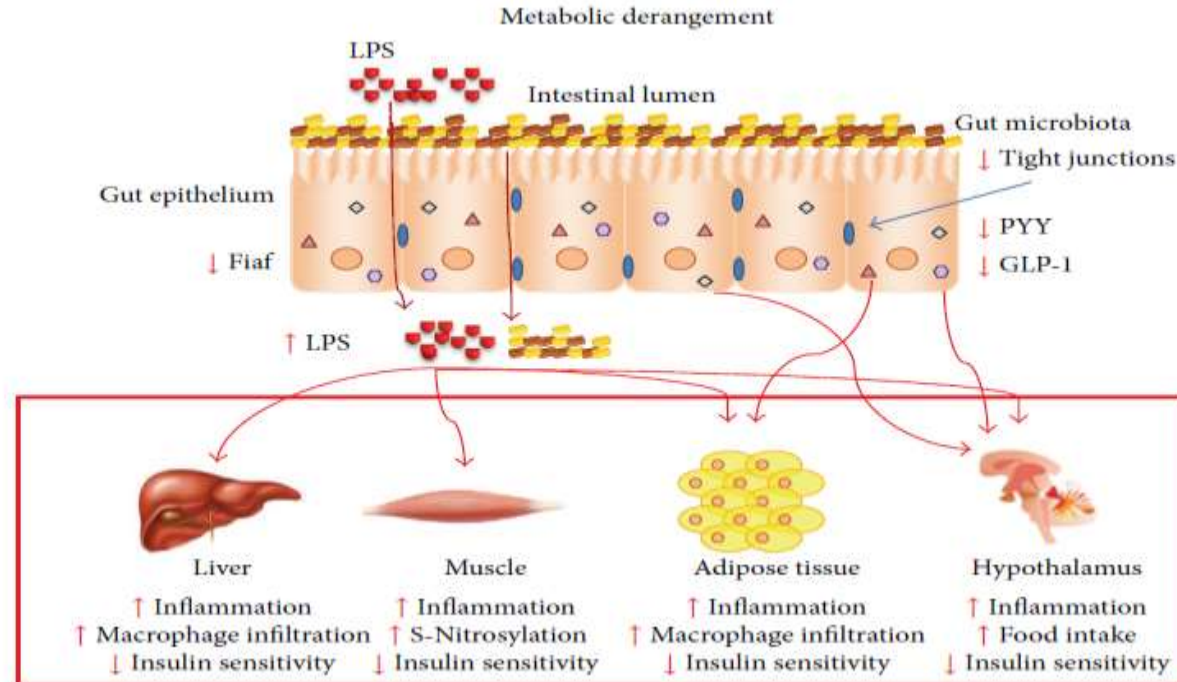
**FORMULATOR OF REDUFLAME - DR. K.V.G.S. MURTY, MBBS**

Physician's Information only

REDUFLAME 13



Manufactured by: M/s. Kalaga Herbal research Labs Pvt Ltd., and  
Marketed by: M/s. Kalaga Integrated Health Care Pvt Ltd.



The gut microbiota is modulated by metabolic derangement, such as nutrition overload and obesity, which promote a cluster of metabolic disease-associated processes that culminate in bacterial products and whole bacteria translocation to the circulation through increased intestinal permeability caused by a reduction in tight junction expression. This triggers an immune response, inflammation, and immune cell infiltration of liver and adipose tissue. It induces insulin resistance in various tissues by diverse mechanisms and food intake deregulation in the hypothalamus promoted by the insulin and leptin resistance and also inhibited expression of gut-secreted anorectic hormones, such as GLP-1 and PYY. Additionally, there is a reduction in the intestinal Fiaf expression mediated by bacteria that deregulate the fat storage and lipid metabolism favoring the obese phenotype.

**FORMULATOR OF REDUFLAME - DR. K.V.G.S. MURTY, MBBS**



Manufactured by: M/s. Kalaga Herbal research Labs Pvt Ltd., and  
Marketed by: M/s. Kalaga Integrated Health Care Pvt Ltd.



Sl. No.	Sanskrit Name Or Local Name	Botanical Name	Part used	Classical Reference
1	Asoca	Saraca asoca	Bark	API PART – I, VOL – I, 9 PAGE NOS. 24-25
2	Amlaki	Emblica officinalis Gaertn.	Fruit	API PART – I, VOL – I, 3 PAGE NOS. 06-08
3	Lashuna	Allium sativum Linn.	Bulb	API PART – I, VOL – III, 50 PAGE NOS. 163 to 165
4	Haridra	Cucuma longa	Rizome	API PART – I, VOL – I, 30 PAGE NOS. 77-79
5	Kundururu	Boswella serrata	Gum Resin	API PART – I, VOL – IV, 24 – PAGE NOS. 83 – 85
6	Guggulu	Commiphora mukul	Gum Resin	API PART – I, VOL – I, 28 PAGE NOS. 73 - 74
7	Punarnava	Borehaavia diffusa	Whole Plant	API PART – I, VOL – I, 60 PAGE NOS. 163 - 165
8	Chitrak	Plumbago Indica	Root	API PART – I, VOL – I, 20 PAGE NOS. 52 - 54



**FORMULATOR OF REDUFLAME - DR. K.V.G.S. MURTY, MBBS**

Physician's Information only

REDUFLAME 15